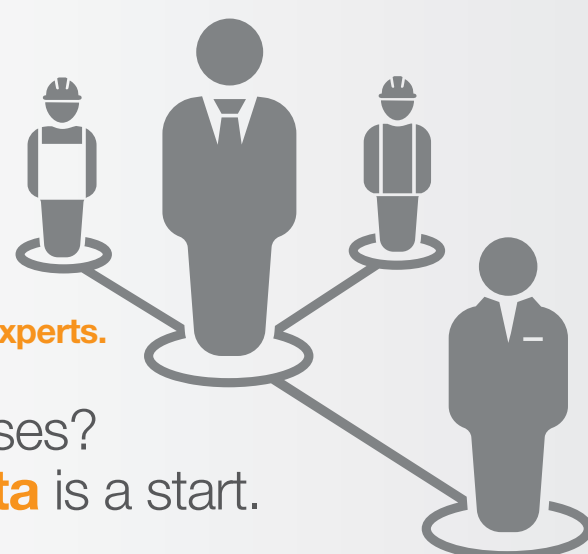


CREATING A COMMUNITY AROUND DATA

CONNECTING SERVICE PROVIDERS AND ASSET OWNERS

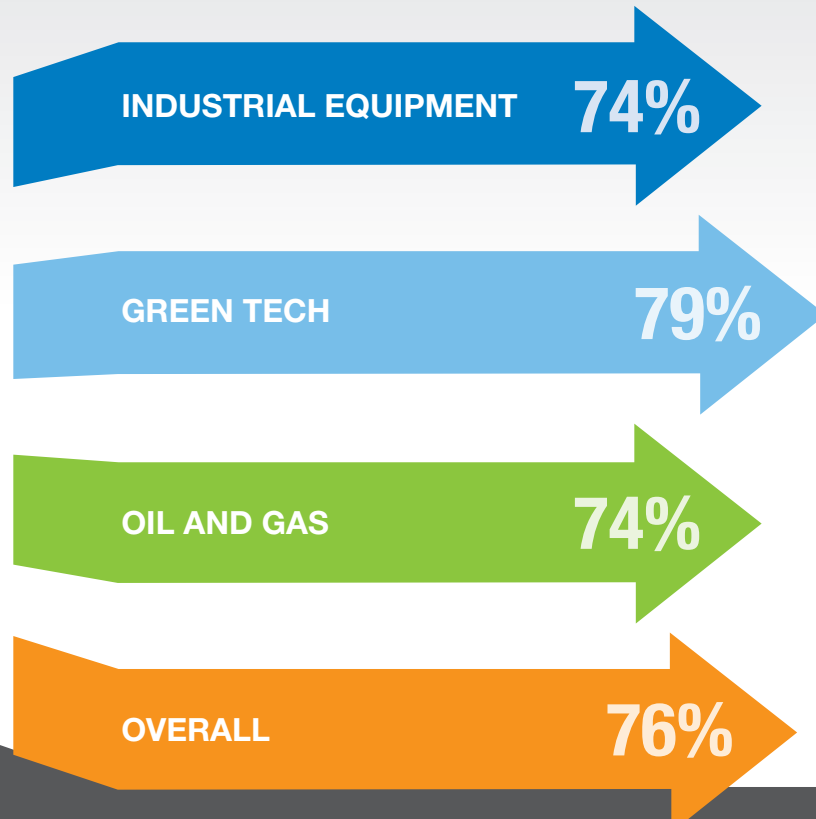
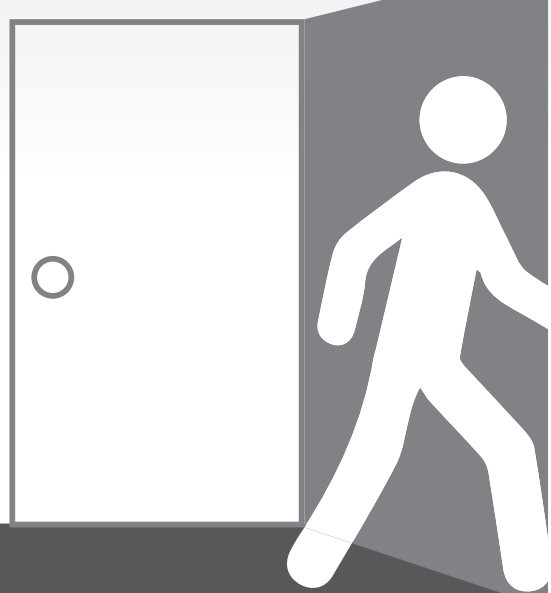
Asset-intensive companies, such as those in energy, are **losing their experts**.



How do these companies grow despite these losses?
Building shared resources around asset data is a start.

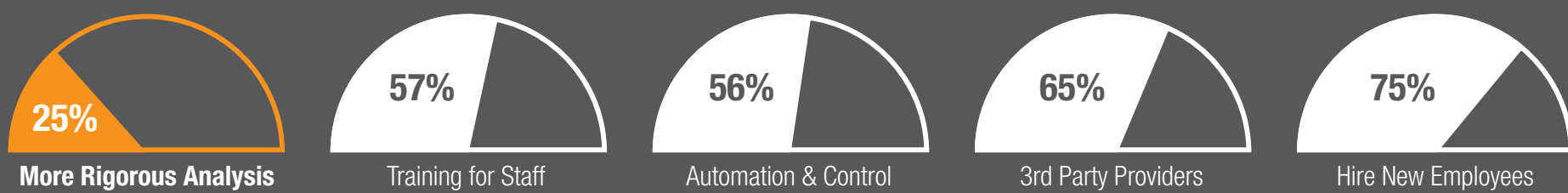
THE TECHNOLOGY TAKEOVER

In the next 5 years, **76% of asset owners expect to lose experts** in asset performance, operations and maintenance, and asset lifecycle management

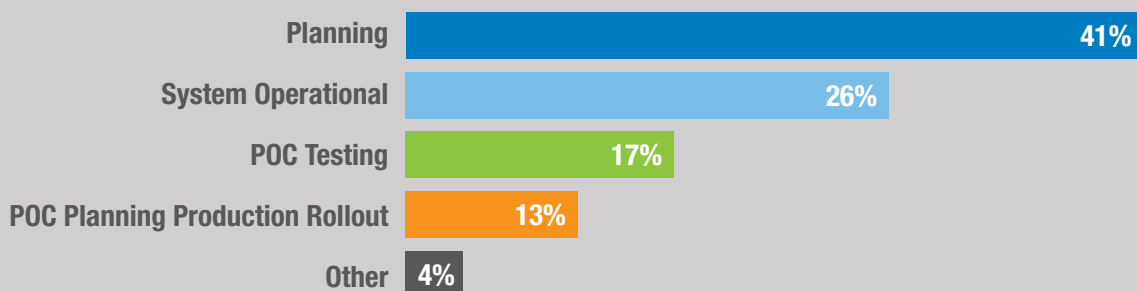


Only 25% of asset owners expect to replace lost asset expertise with more rigorous data analysis.

The introduction of new technologies and data sources, however, will provide asset owners new opportunities for their data.

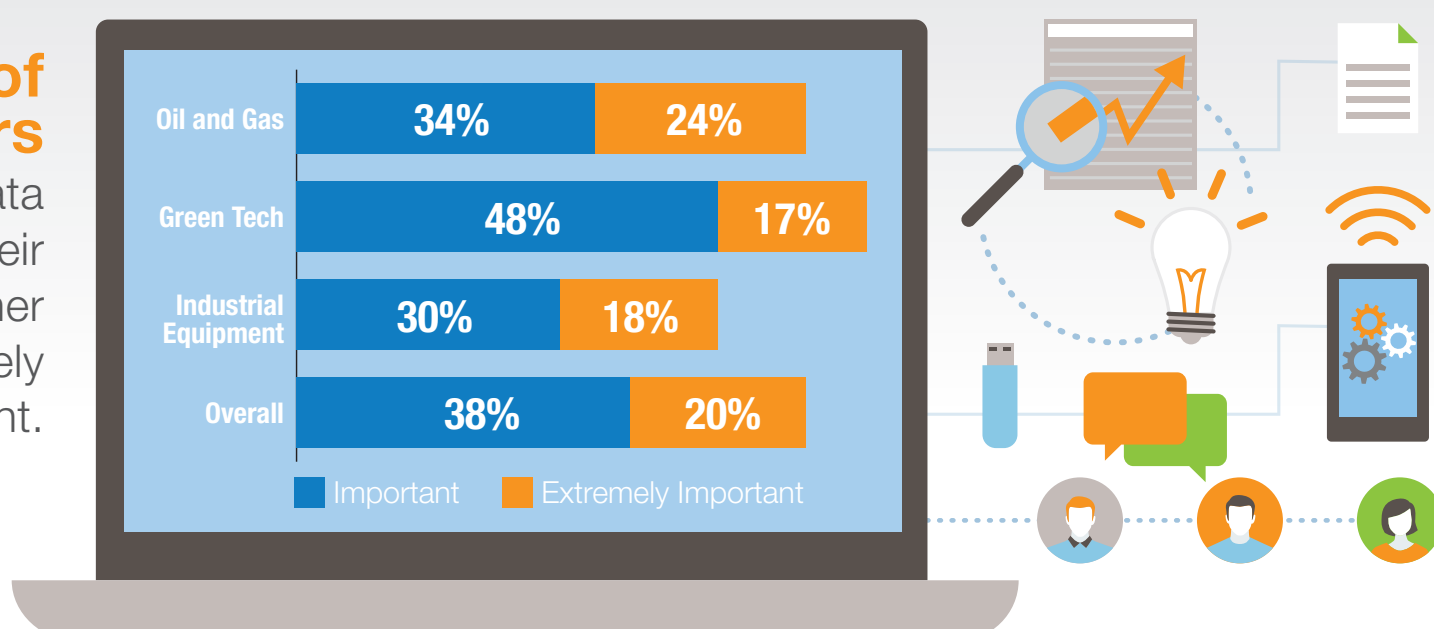


Some asset owners are already taking advantage of new technologies, **such as IoT**, by integrating them into operational systems, but most are still planning how to fully leverage their benefits.

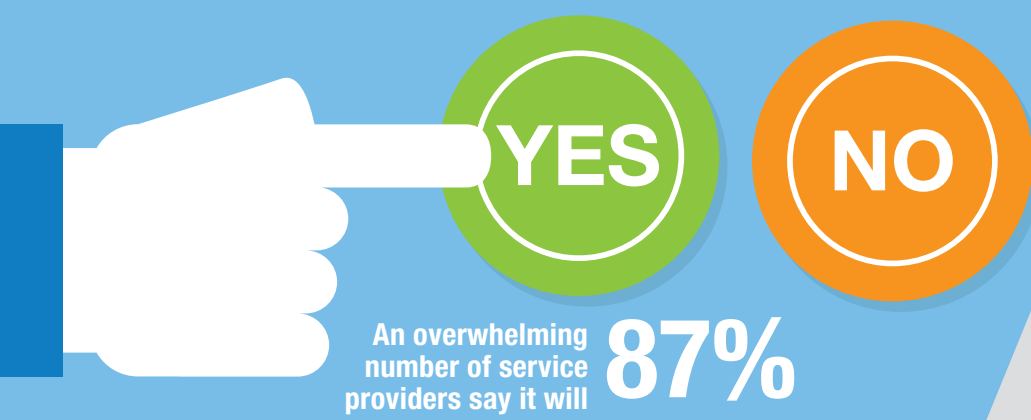


SHARING IS KEY

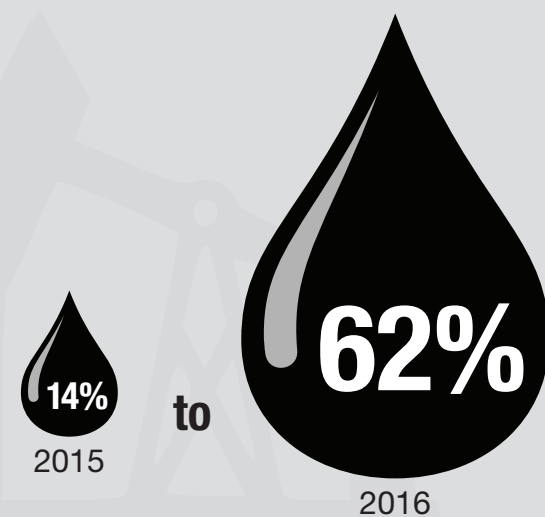
Nearly **2/3 of service providers** believe sharing data and analysis with their customers is either important or extremely important.



Will data sharing increase over the next five years?

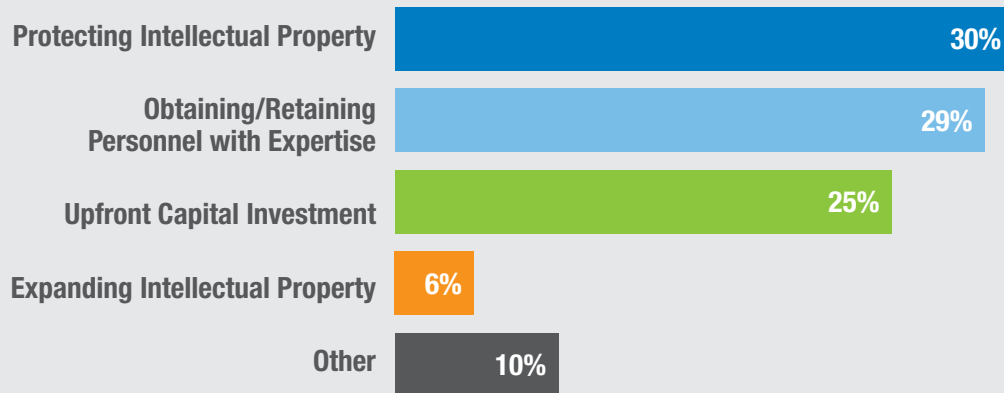


Since 2015, the amount of the **oil and gas asset owners** who are **very comfortable with data-sharing** jumped.



Service providers must consider several factors

when providing better data and analytics connections to customers, including protecting intellectual property, obtaining personnel with the right expertise and providing upfront capital investment.



There are opportunities to build a stronger community around your organization's asset data. Check out the full report [here](#) for more details.



OSIsoft

<http://www.osisoft.com>



Source data: 2015 and 2016 Zpryme studies of asset owners and service providers in Industrial Equipment, Green Tech, and Oil and Gas industries.